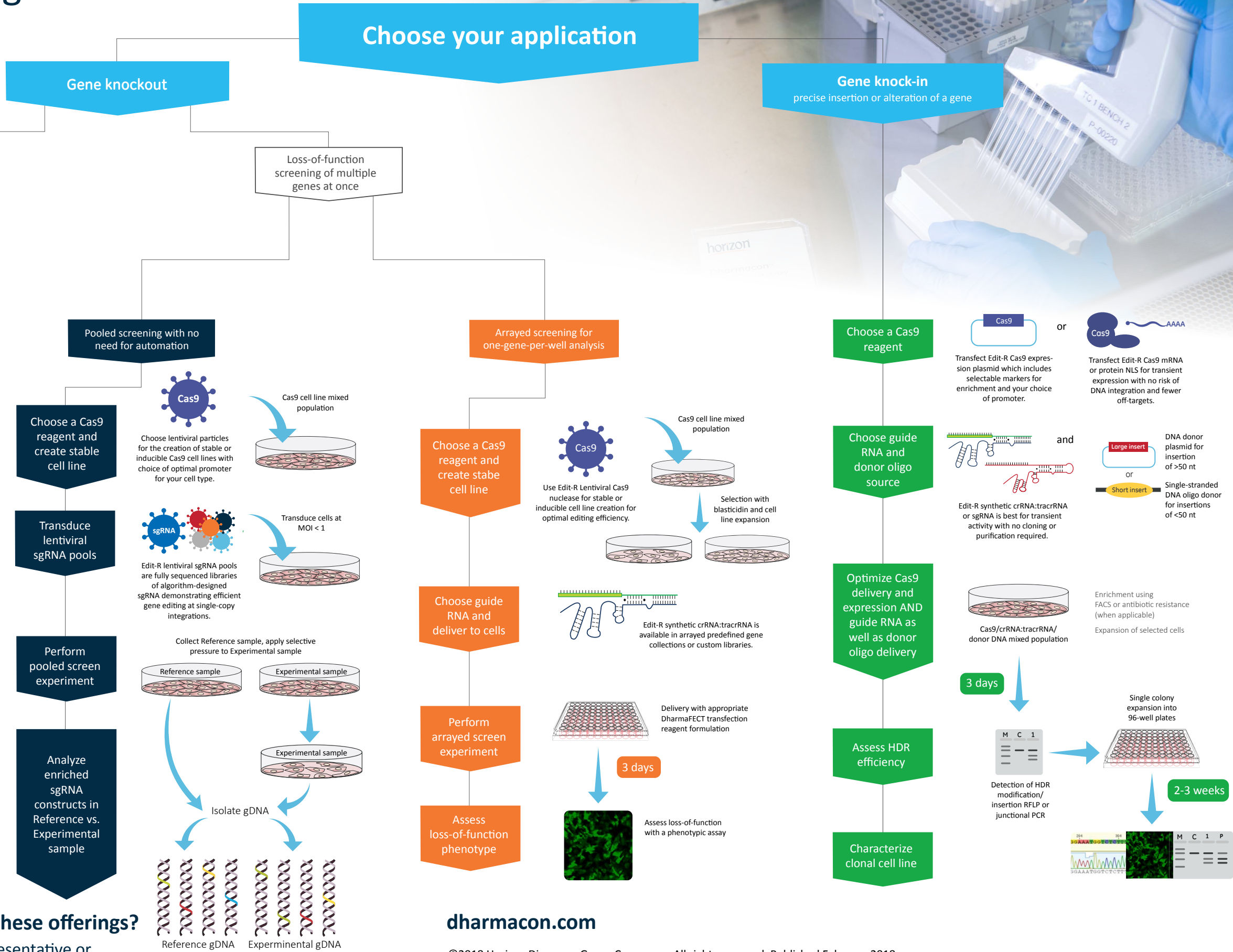


Dharmacon™ Gene Editing Workflows

Choose the right tools for your application

Whether your goal is gene knockout from imperfect repair by non-homologous end joining (NHEJ) or creating an insertion or other knock-in with homology-directed repair (HDR), this workflow guide will assist you in selecting the right Edit-R™ genome engineering tools for your application.



Ready to learn more about these offerings?

Contact your local Dharmacon representative or email us at ts.dharmacon@horizondiscovery.com

dharmacon.com

©2018 Horizon Discovery Group Company—All rights reserved. Published February 2018.
UK Registered Head Office: Building 8100, Cambridge Research Park, Cambridge, CB25 9TL, United Kingdom